

Caught in the Crossfire (Los Angeles) LAC+USC and CAL Hospital Clients 2008 Year-End Report (January 1 – December 31, 2008)

NUMBERS SERVED

Total number of clients served: 89

(includes clients who were referred last year but continued to receive services this year)

Total number of new family members contacted: 220

Total number of clients active during each month:

Month	Total Served
January	27
February	23
March	23
April	23
May	20
June	30
July	36
August	34
September	36
October	35
November	33
December	36

OUTCOME OF ALL CLIENT REFERRALS DURING 2008

Number of referred youth who became active cases	72 (55%)
Number of referred youth who were unable to be contacted by IS	34 (26%)
Number of referred youth who declined services	25 (19%)
<i>Number of referred youth who were ELIGIBLE (live within the service area)*</i>	131 (100%)
<i>Number of referred youth who were INELIGIBLE (live out of service area)*</i>	92
Total number of youth referred by LAC+USC & CAL Hospital this year	223

* Intervention Specialists (I.S.) meet with all hospitalized youth who consent to participate in Caught in the Crossfire. During hospitalization, I.S.s provide services to reduce risk of retaliation and address immediate needs. Upon discharge, additional provision of services is limited to youth residing within a ten-mile radius of the hospital.

OUTCOME OF ALL CLIENT REFERRALS DURING 2008:



OUTCOMES:

- 100% of clients were **not hospitalized for a violence-related injury.**
- 99% of clients were **not arrested for a new offense.**
- 10 clients got a **new job**
- 20 clients got **enrolled/re-enrolled in school** (includes traditional middle/high schools, alternative schools and home school/independent study)
- 19 clients **participated in an educational support program** (includes tutoring & GED preparation)
- 2 clients **earned a GED or high school diploma**
- 3 clients got **enrolled in college**
- 1 clients **completed probation**

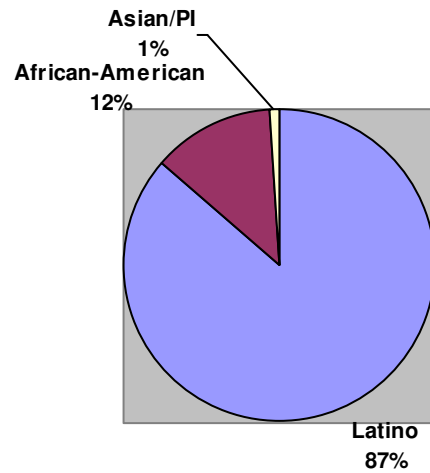
CLIENT DEMOGRAPHICS

(2008 aggregate data)

AGE	Percentage of All 2008 Clients (N=89)
12 years old	1%
13 years old	3%
14 years old	7%
15 years old	4%
16 years old	16%
17 years old	14%
18 years old	18%
19 years old	20%
20 years old	17%

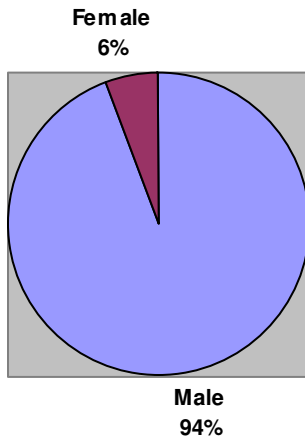


ETHNICITY	Percentage of All 2008 Clients (N=89)
Latino	87%
African-American	12%
Asian/Pacific Islander	1%



GENDER of All 2008 Clients (N=89):

- Male: 94%
- Female: 6%



CLIENT PROFILE

(2008 Aggregate Data)

SCHOOL ENROLLMENT STATUS	Percentage of All 2008 Clients (N=89)
Enrolled in school	61%
Not enrolled in school	39%

* Note: Includes enrollment in traditional & alternative schools, including home school/independent study.

EMPLOYMENT STATUS	Percentage of All 2008 Clients (N=89)
Employed (part-time or full-time)	21%
Not employed	79%

RESIDENTIAL STATUS	Percentage of All 2008 Clients (N=89)
Mother Only	46%
Both Parents	36%
Independent	4%
Grandparent(s)	2%
Father Only	2%
Other Relative	9%
Homeless	1%

PROBATION STATUS	Percentage of All 2008 Clients (N=89)
On Probation	27%
Not on Probation	69%
Unknown	4%

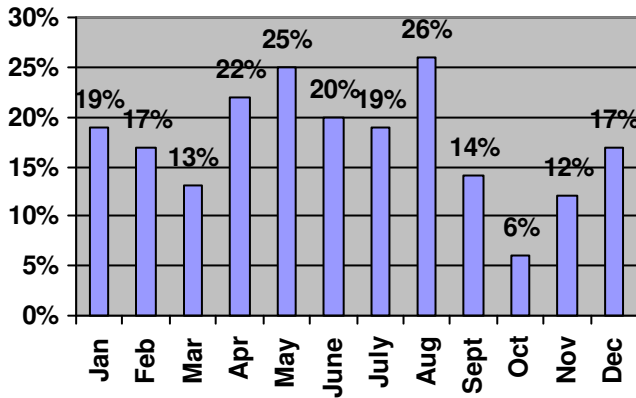
TYPE OF INJURY	Percentage of All Clients Referred During 2008 (N=223)
Gunshot Wound	70%
Physical Assault	13%
Stab Wound	16%
Other*	1%

* Includes all hospital referrals, including those that did not become active. Two youth referred were siblings of active clients; therefore no injury is listed for those individuals.

SERVICES

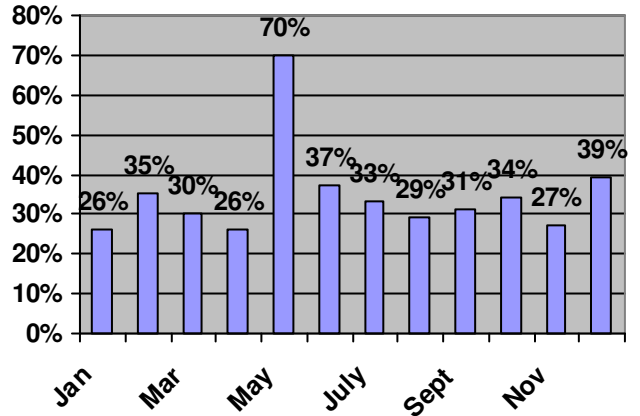
(% of clients receiving or participating in services 1/1/08-12/31/08):

Vocational assistance: (n=89) Average=34%

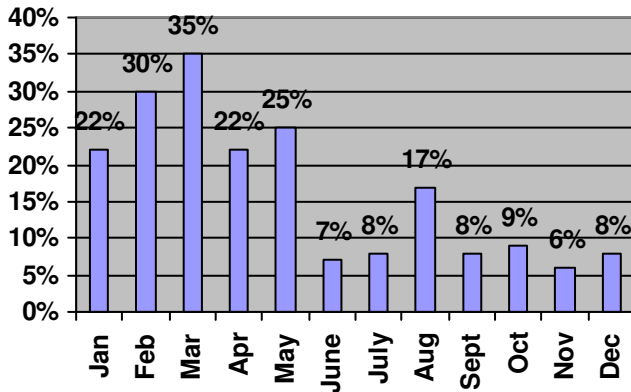


Assistance with health care services:

Average= (n=89) 60%

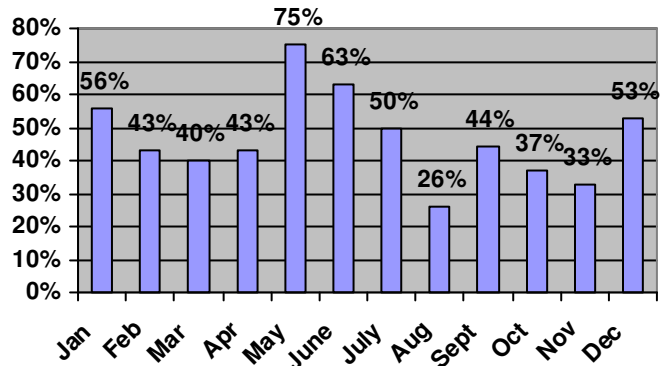


Counseling: Average= (n=89) 26%

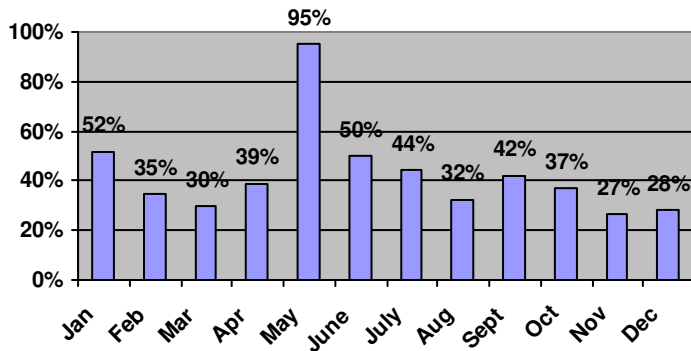


Assistance preparing or completing documentation:

Average= (n=89) 75%



Legal advocacy: Average= (n=89) 73%



Transportation Passes: Average= (n=89) 57%

